



# TPD52 Polyclonal Antibody

<b>Catalog No</b>	YP-Ab-00537
<b>Isotype</b>	IgG
<b>Reactivity</b>	Human;Mouse
<b>Applications</b>	IHC;IF;ELISA
<b>Gene Name</b>	TPD52
<b>Protein Name</b>	Tumor protein D52
<b>Immunogen</b>	The antiserum was produced against synthesized peptide derived from human TPD52. AA range:41-90
<b>Specificity</b>	TPD52 Polyclonal Antibody detects endogenous levels of TPD52 protein.
<b>Formulation</b>	Liquid in PBS containing 50% glycerol, 0.5% BSA and 0.02% sodium azide.
<b>Source</b>	Polyclonal, Rabbit,IgG
<b>Purification</b>	The antibody was affinity-purified from rabbit antiserum by affinity-chromatography using epitope-specific immunogen.
<b>Dilution</b>	IHC: 1/100 - 1/300. ELISA: 1/40000.. IF 1:50-200
<b>Concentration</b>	1 mg/ml
<b>Purity</b>	≥90%
<b>Storage Stability</b>	-20°C/1 year
<b>Synonyms</b>	TPD52; Tumor protein D52; Protein N8
<b>Observed Band</b>	
<b>Cell Pathway</b>	cytoplasm,endoplasmic reticulum,perinuclear region of cytoplasm,
<b>Tissue Specificity</b>	Isoform 2 is expressed in colon, breast, prostate, pancreas and kidney tumor cell lines. Isoform 2 is expressed at high levels in kidney, prostate, brain, small intestine and pancreas, at moderate levels in placenta and colon, at low levels in lung, liver and heart, and at very low levels in spleen, thymus, peripheral mononuclear blood cells, testis and ovary.
<b>Function</b>	caution:The sequence shown here is derived from an Ensembl automatic analysis pipeline and should be considered as preliminary data.,developmental stage:Isoform 2 is expressed at lower levels in fetal brain and kidney than in adult brain and kidney.,similarity:Belongs to the TPD52 family.,subunit:Forms homodimer or heterodimer with other members of the family.,tissue specificity:Isoform 2 is expressed in colon, breast, prostate, pancreas and kidney tumor cell lines. Isoform 2 is expressed at high levels in kidney, prostate, brain, small intestine and pancreas, at moderate levels in placenta and colon, at low levels in lung, liver and heart, and at very low levels in spleen, thymus, peripheral mononuclear blood cells, testis and ovary.,



## Background

caution: The sequence shown here is derived from an Ensembl automatic analysis pipeline and should be considered as preliminary data. .developmental stage: Isoform 2 is expressed at lower levels in fetal brain and kidney than in adult brain and kidney. .similarity: Belongs to the TPD52 family. .subunit: Forms homodimer or heterodimer with other members of the family. .tissue specificity: Isoform 2 is expressed in colon, breast, prostate, pancreas and kidney tumor cell lines. Isoform 2 is expressed at high levels in kidney, prostate, brain, small intestine and pancreas, at moderate levels in placenta and colon, at low levels in lung, liver and heart, and at very low levels in spleen, thymus, peripheral mononuclear blood cells, testis and ovary. .

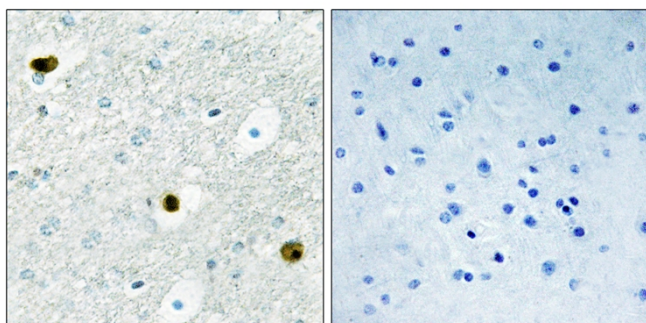
## matters needing attention

Avoid repeated freezing and thawing!

## Usage suggestions

This product can be used in immunological reaction related experiments. For more information, please consult technical personnel.

## Products Images



Immunohistochemistry analysis of paraffin-embedded human brain tissue, using TPD52 Antibody. The picture on the right is blocked with the synthesized peptide.